


FENIX NTM[®]



NANOTECH MATT MATERIAL
FOR INTERIOR DESIGN.



An abstract geometric composition featuring several overlapping planes and surfaces. The color palette is primarily dark grey and black, with a prominent light grey surface in the foreground and a vibrant blue surface in the background. The lighting creates strong shadows and highlights, emphasizing the three-dimensional nature of the forms. The overall aesthetic is clean, modern, and architectural.

FENIX NTM[®],
NANOTECH MATT MATERIAL
FOR INTERIOR DESIGN.
MADE IN ITALY.

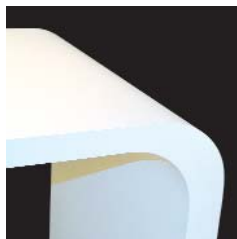
A TIMELESS MATERIAL FOR NEVERENDING DESIGN STORIES.

FENIX NTM® is an innovative material created for interior design applications by Arpa Industriale.

It is suitable for both vertical and horizontal use.

The external surface of FENIX NTM involves the use of nanotechnology and its decor is obtained through next generation resins developed thanks to Arpa Industriale's research.

FENIX NTM is suitable for different interior design applications: kitchens, hospitality, healthcare, transportation, bathrooms, furniture (tables, bookshelves, partitions, chairs).



OPEN YOUR MIND AND CREATE SURFACES FOR NEW THOUGHTS.

FENIX NTM® è un materiale innovativo di Arpa Industriale creato per l'interior design, adatto ad applicazioni sia verticali sia orizzontali. La parte esteriore di FENIX NTM è ottenuta con l'ausilio di nanotecnologie ed è caratterizzata da una superficie decorativa trattata con resine di nuova generazione frutto della ricerca di Arpa. FENIX NTM è adatto a molteplici applicazioni tipiche dell'interior design: cucine, hospitality, healthcare, trasporti, bagni, elementi di arredo (tavoli, librerie, partizioni, sedie).

FENIX NTM® ist ein bahnbrechendes Material kreiert von Arpa speziell für den Einsatz im Interiorbereich. Es ist sowohl für vertikale als auch horizontale Applikationen geeignet. Die dekorative Oberfläche wird durch eine spezielle Nanotechnologie veredelt. Eine neue Generation von Harzen wurde hierfür von Arpa entwickelt. FENIX NTM eignet sich für die vielseitigsten Anwendungen im Innenbereich: Küche, Sanitär, Transport, Bad und Möbel (Tische, Regale, Abtrennungen, Stühle).

FENIX NTM® est un produit innovant créé par Arpa Industriale pour des applications intérieures design. Il est parfaitement adapté aux applications verticales et horizontales. La surface décorative de FENIX NTM est obtenue par l'utilisation de la nanotechnologie combinée à des résines de nouvelle génération développées grâce à la recherche d'Arpa Industriale. FENIX NTM est recommandé pour de nombreuses applications de design intérieur telles que cuisines, hôtellerie, hôpitaux, transports, salles de bains, mobilier (tables, bibliothèques, cloisons, chaises).

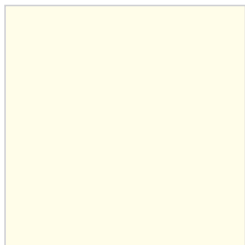
FENIX NTM® es un material innovador creado para aplicaciones de diseño de interior por Arpa Industriale, adecuado para aplicaciones tanto verticales como horizontales. La superficie exterior de FENIX NTM se obtiene con la aplicación de la nanotecnología y se caracteriza por una superficie decorativa tratada con resinas de nueva generación resultado de la investigación de Arpa Industriale. FENIX NTM es adecuado para múltiples aplicaciones del diseño de interior: cocina, hostelería, sanidad, transportes, baños, muebles (mesas, estanterías, tabiques, sillas).





COLOURS

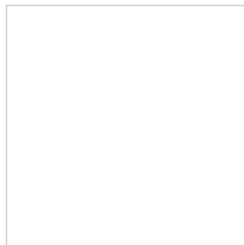
0029 Bianco Malè



0032 Bianco Kos



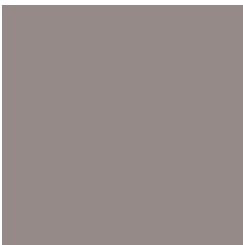
0030 Bianco Alaska



0719 Beige Luxor



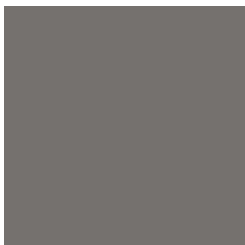
0716 Rosa Colorado



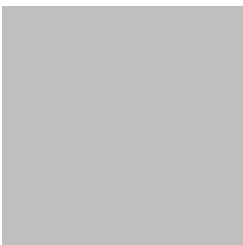
0717 Castoro Ottawa



0718 Grigio Londra



0725 Grigio Efeso



0724 Grigio Bromo

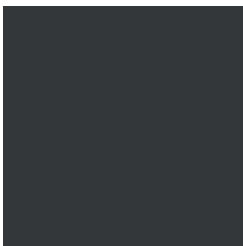


COLOURS

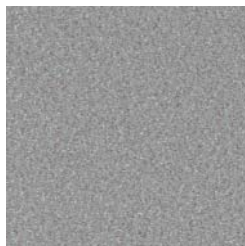
0721 Blu Delft



0720 Nero Ingo



2638 Titanio Doha



2628 Zinco Doha

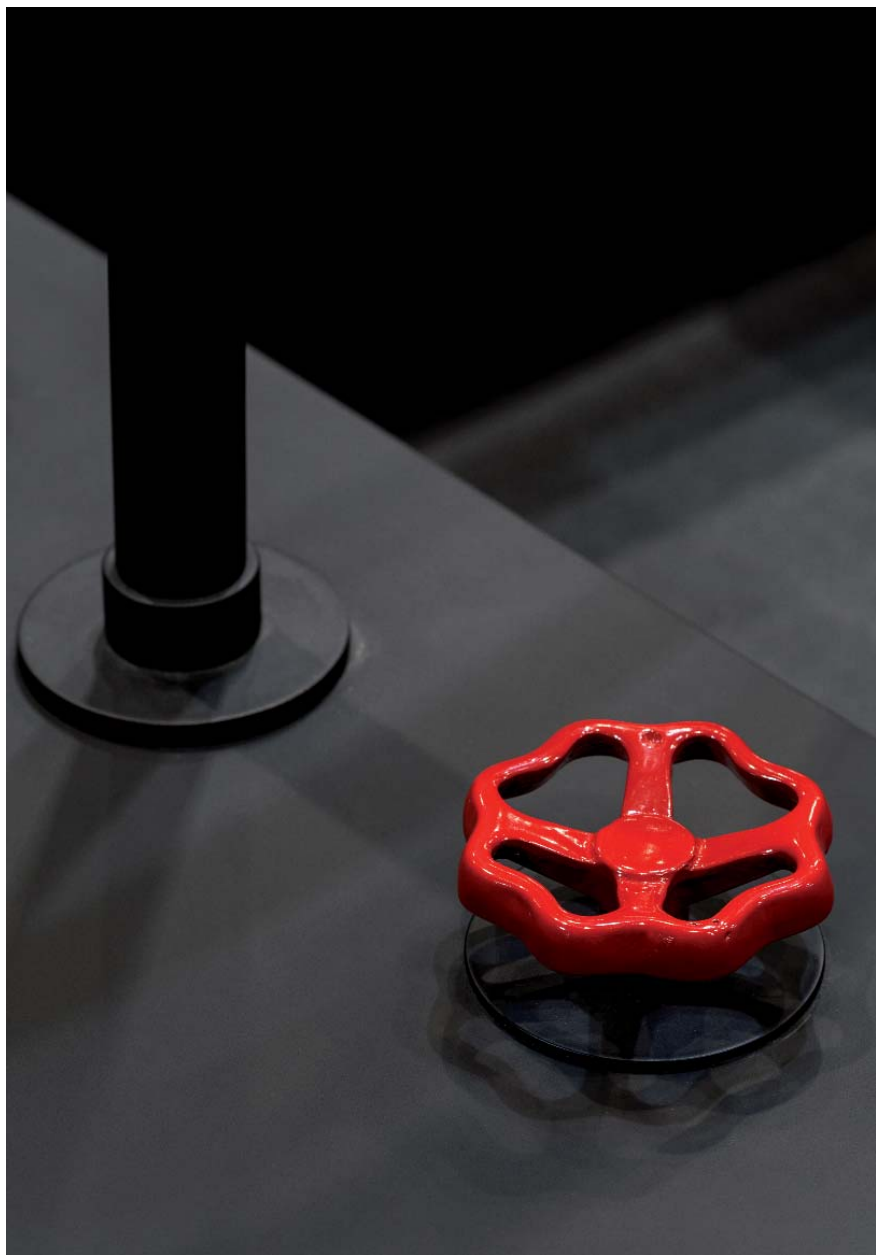


2629 Bronzo Doha








2630 Piombo Doha





Code	Name	Code	Name
0029	Bianco Malè	0721	Blu Delft
0030	Bianco Alaska	0724	Grigio Bromo
0032	Bianco Kos	0725	Grigio Efeso
0716	Rosa Colorado		
0717	Castoro Ottawa	2628	Zinco Doha
0718	Grigio Londra	2629	Bronzo Doha
0719	Beige Luxor	2630	Piombo Doha
0720	Nero Ingo	2638	Titanio Doha

Thickness	Decor	Type/Core	Size	
 mm			 3050x1300 mm	 4200x1600 mm
0,9 mm	All FENIX NTM range	Standard	•	•
1,2 mm	All FENIX NTM range	With matched colour core	•	•
10,0 mm	All FENIX NTM range except 0029, 0030, 0032, 0720	Single sided black core	•	•
	All FENIX NTM range	Double sided black core	•	•
	0029, 0030, 0032	Double sided white core	•	•
12,0 mm	All FENIX NTM range except 0029, 0030, 0032, 0720	Single sided black core	•	•
	All FENIX NTM range	Double sided black core	•	•
	0029, 0030, 0032	Double sided white core	•	•



MATT AND SOFT TOUCH SURFACE.

Thanks to the use of last generation thermoplastic resins, FENIX NTM's surface is extremely closed.

The irregular surface topography has as a result a very low light reflectivity (a surface specular reflectance of 1,5 at 60°) and the soft touch effect.

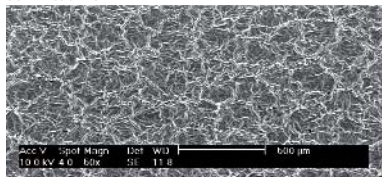
Grazie all'uso di resine termoplastiche di ultima generazione, la superficie di FENIX NTM risulta essere estremamente chiusa. La topografia irregolare della superficie ha come risultato una bassa riflessione della luce (valore di riflessione speculare: 1,5 a 60°) e l'effetto soft touch.

Grâce à l'utilisation de résines thermoplastiques de dernière génération, la surface de FENIX NTM est extrêmement fermée. La topographie irrégulière a comme résultat une très faible réflectivité de la lumière (réflectance de la surface : 1,5 à 60°) et le toucher soyeux.

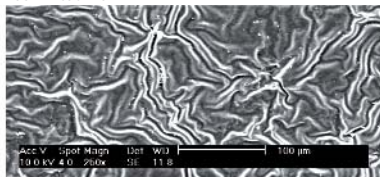
Dank einer neuen Generation thermoplastischer Harze bietet FENIX NTM eine extrem geschlossene Oberfläche und eine besonders weiche Haptik. Die unebene Oberfläche im Nanobereich sorgt zudem für eine besonders geringe Lichtreflexion (1,5 bei einem Winkel von 60 Grad).

Gracias a la utilización de resinas termoplásticas de última generación, la superficie de FENIX NTM es extremadamente densa. Su topografía irregular resulta en una reflectancia mínima de la luz (reflectancia especular de superficie: 1,5 a 60°) y un efecto suave al tacto.

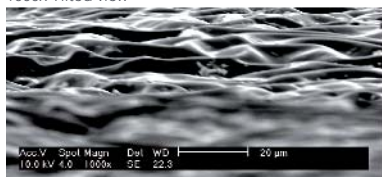
50x Tilted view



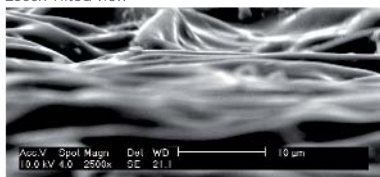
250x Tilted view



1000x Tilted view



2500x Tilted view



FEATURES

LOW LIGHT REFLECTIVITY, EXTREMELY MATT SURFACE

THERMAL HEALING OF MICROSCRATCHES

ANTI-FINGERPRINT

SOFT TOUCH

RESISTANCE TO SCRATCHES AND ABRASION

RESISTANCE TO DRY HEAT

HIGH RESISTANCE TO ACID SOLVENTS AND HOUSEHOLD REAGENTS

ENHANCED ANTI-BACTERIAL PROPERTIES



Bassa riflessione della luce, superficie estremamente opaca
Riparabilità termica dei micrograffi
Anti-impronta
Morbidezza al tatto
Resistenza ai graffi e all'abrasione
Resistenza al calore secco
Elevata resistenza a solventi acidi e ai reagenti di uso domestico
Alta attività di abbattimento della carica batterica

Geringe Lichtreflexion, extrem matte Oberfläche
Thermische Bearbeitung von Kratzern möglich
Keine Fingerabdrücke
Weicher Touch
Resistent gegen Kratzer und Abrieb
Resistent gegen trockene Hitze
Resistent gegen säurehaltige und alle haushaltsüblichen Reiniger
Verbesserte antibakterielle Eigenschaften

Faible réflectivité, surface extrêmement mate
Réparation thermique des micro-rayures
Aucune trace de doigts
Toucher soyeux
Résistance aux rayures et à l'abrasion
Résistance à la chaleur sèche
Grande résistance aux solvants et nettoyants ménagers
Propriétés antibactériennes renforcées

Reflectancia mínima de la luz, superficie extremadamente mate
Reparabilidad térmica de microarañazos
Anti-huella digital
Suave al tacto
Resistencia a los arañazos y a la abrasión
Resistencia al calor seco
Alta resistencia a disolventes ácidos y reactivos para uso doméstico
Propiedad anti-bacterias reforzada

FEATURES



Hygienic

Igienico
Hygiène
Hygienisch
Higiénico



Resistance to impact

Resistenza all'urto
Résistance aux chocs
Schlagfest
Resistencia al impacto



Suitable for contact with food

Idoneo al contatto con gli alimenti
Agréé pour le contact alimentaire
Geeignet für den Kontakt mit Lebensmitteln
Apto para el contacto con alimentos



Lightfastness

Stabilità alla luce
Résistance à la lumière
Lichtecht
Estabilidad a la luz



Easy to clean

Facile da pulire
Facilité d'entretien
Einfach zu Reinigen
Fácil de limpiar



Excellent intensity and colour depth

Eccellente intensità e profondità del colore
Profondeur et intensité des couleurs
Exzellente Farbtiefe und dekorativer Ausdruck
Excelente intensidad y profundidad del color



Mold-resistant

Antimuffa
Résistance aux moisissures
Schimmelsicher
Antioxidante libre de moho



Rub resistance

Resistenza allo strofinamento
Résistance au frottement
Wischfest
Resistente a la fricción regular



Antistatic

Antistatico
Antistatique
Antistatisch
Antiestático



Self-supporting (only for 10 and 12 mm)

Autoportante (solo per gli spessori 10 e 12 mm)
Autoportant (uniquement en 10 et 12 mm)
Selbsttragend (in den Stärken 10 und 12 mm)
Autoportante (únicamente en 10 y 12 mm)



Hydro-repellent

Idrorepellente
Imperméable
Wasserabweisend
Hidrófugo



Dimensional stability even at high temperature changes

Stabilità dimensionale in presenza di elevata variazione termica
Stabilité dimensionnelle même en cas de grande variation thermique
Hohe dimensionale Stabilität auch bei großen Temperaturschwankungen
Estabilidad dimensional en caso de elevada variación térmica



APPLICATIONS

KITCHEN
BATHROOM
FURNITURE
HEALTHCARE
HOSPITALITY
OFFICE
TRANSPORTATION
ELEVATORS
DOORS

Cucina
Bagno
Arredamento
Healthcare
Hospitality
Uffici
Trasporti
Ascensori
Porte

Küche
Bad- und Sanitärbereich
Möbel
Bewirtung
Gesundheitswesen
Büro
Transport
Aufzüge
Türen

Cuisines
Salles de bain
Mobilier
Santé
Hotels et restaurants
Bureaux
Transports
Ascenseurs
Portes

Cocina
Baño
Mobiliario
Sector sanitario
Hostelería
Oficina
Transportes
Ascensores
Puertas

HONOURS AND AWARDS



Best of the Best



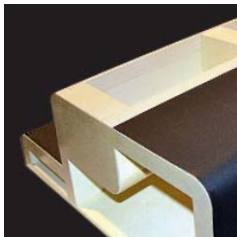
First Prize
Design Category



Selected by ADI
for ADI Design Index



Best Design Material



OVER 60 YEARS OF RESEARCH, TECHNOLOGY AND INNOVATION.

Since 1954 Arpa Industriale has been designing and manufacturing panels with very high quality HPL technology for the most diverse applications: from architecture to interior design, from healthcare to shipyards, from transport to hospitality, from retail to kitchens.

Dal 1954, Arpa progetta e produce pannelli con tecnologia HPL di alta qualità per le più svariate destinazioni d'uso: dall'architettura al design d'interni, dall'healthcare alla cantieristica navale, dal trasporto all'hospitality, dal retail al kitchen.

Seit 1954 fertigt und entwickelt Arpa Industriale hochwertige HPL- und Vollkernplatten für die Innenanwendung: von der Küche bis zu medizinischen Bereichen, im Laden- und Messebau, im Schiffsbau und in Sanitärbereichen, im Gastro- und Hotelbereich - vielfältigste Anwendungen für Objekt und Architektur.

Depuis 1954, Arpa Industriale conçoit et fabrique des panneaux HPL haut de gamme pour les applications les plus diverses : des projets architecturaux aux agencements intérieurs, des établissements médicaux aux chantiers navals, du transport à l'hôtellerie, des boutiques aux cuisines.

Desde 1954, Arpa Industriale diseña y fabrica paneles HPL con tecnología de la más alta calidad para los más diversos usos y aplicaciones: en arquitectura y diseño de interiores, para astilleros, cocinas, para los sectores sanitario, de hotelería y turismo, de transportes, de venta al por menor...

DISCLAIMER

The disclaimer that follows is a summary of the applicable full disclaimer (which can be found on arpaindustriale.com). The information provided by Arpa Industriale S.p.A. ("Arpa") in this document is solely indicative. Arpa is unable to warrant the accuracy and completeness of this information. No rights can be derived from the information provided; the use of the information is at the other party's risk and responsibility. This document does not guarantee any properties of Arpa's products. Arpa does not warrant that the information in this document is suitable for the purpose for which it is consulted by the other party. The document does not contain any design, structural calculation, estimate or other warranty or representation that customers and third parties may rely on. Colours used in Arpa's communications (including but not limited to printed matter) and in samples of Arpa's products may differ from the colours of the Arpa's products to be supplied. Arpa's products and samples are produced within the specified colour tolerances and the colours (of production batches) may differ, even if the same colour is used. The viewing angle also influences the colour perception. Customers and third parties must have a professional adviser inform them about (the suitability of) the Arpa's products for all desired applications and about applicable laws and regulations. Arpa reserves the right to change (the specifications for) its products without prior notice. To the maximum extent permitted under the applicable law, Arpa is not liable (neither contractual nor non-contractual) for any damage arising from or related to the use of this document, except if and to the extent that such damage is the result of wilful misconduct or gross negligence on the part of Arpa and/or its management. All oral and written statements, offers, quotations, sales, supplies, deliveries and/or agreements and all related activities of Arpa are governed by the General Terms and Conditions of Arpa Industriale S.p.A. All oral and written statements, offers, quotations, sales, supplies, deliveries and/or agreements and all related work of Arpa USA, Inc. ("Arpa USA") are governed by the Arpa USA General Terms and Conditions of Sale. All intellectual property rights and other rights regarding the content of this document (including logos, text and photographs) are owned by Arpa and/or its licensors.



FENIX NTM®

Arpa Industriale S.p.A.
Via Piumati, 91
12042 Bra (CN) - Italy
Tel. +39 0172 436111

made in Italy by Arpa Industriale

A600503 - 05.2015

fenixntm.com

FOLLOW US

